

1553-1559 Franklin Street, San Francisco, CA 94109

\$7,350,000 • BRE# 01855832 • Mixed-use development

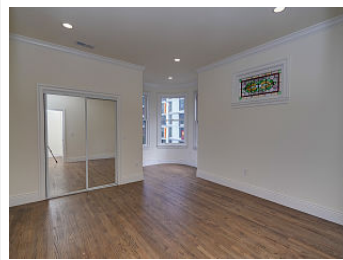
• 8,400 Square Feet



View virtual tour at:
<https://tour.bayareatourwizards.com/61542/>



Iconic trophy building in one of San Francisco's finest neighborhoods. Built in 1908, this property has undergone an extensive renovation. Above the street level restaurant, there are three vacant flats. Ranging from three to four bedrooms per unit, each has new plumbing, wiring, kitchen, bathroom, appliances, double pane windows, doors, drywall, and paint. No detail has been overlooked in this restoration. Located in prestigious Pacific Heights at the intersection of Franklin and Pine. Just steps to the Polk St. and Van Ness commercial districts with many fine restaurants and boutiques. Close proximity to CPMC Hospital. Easy access to transit and main thoroughfares. Don't miss out on this one of a kind property.



Jonathan Britton

DRE#01855832
(415) 934-1100
brittonco@gmail.com

W.J. Britton & Co.

W.J. BRITTON & CO.



The information contained herein has been obtained through sources deemed reliable, but cannot be guaranteed as to its accuracy. Not intended to solicit buyers or sellers currently under contract with a brokerage.